

For Lease

#240, 3015 12 Street N.E.

HAMPSHIRE COURT

Office • 1,564 sqft



- Kitchen
- 4 Offices
- Large Server Room

- Central location
- Ample parking – surface and energized
- Close proximity to City Centre & Airport



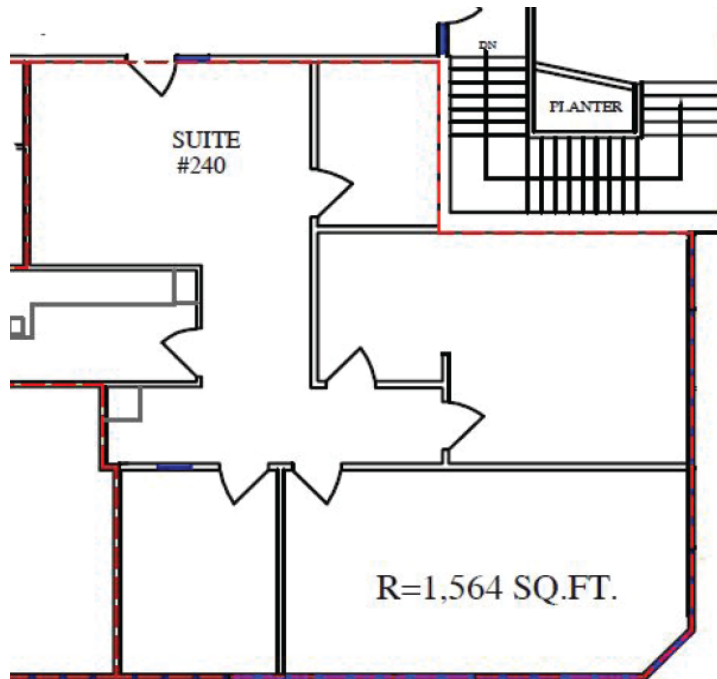
Kevin Deeks
Mobile: 403.819.8331
Fax: 403.291.3591
Email: KDeeks@NorcalGroup.com

Todd Nielsen
Mobile: 403.540.8282
Fax: 403.291.3591
Email: Todd@NorcalGroup.com

Property Highlights:

#240, 3015 12 Street N.E.

| | |
|-------------------------|-------------------------------|
| ZONING: | I-B |
| BUILDING SIZE: | 24,985 sqft |
| SIZE OF UNITS: | 1,564 sqft |
| PARKING: | Ample - Surface and Energized |
| MECHANICAL: | Roof Top Units in Offices |
| LEASE RATE: | \$12.00 per sqft |
| OPERATING COSTS: | \$8.18 per sqft |
| PROPERTY TAXES: | \$1.48 per sqft |
| AVAILABLE: | Immediately |



Kevin Deeks
Mobile: 403.819.8331
Fax: 403.291.3591
Email: KDeeks@NorcalGroup.com

Todd Nielsen
Mobile: 403.540.8282
Fax: 403.291.3591
Email: Todd@NorcalGroup.com