

For Lease

#280, 3015 12 Street N.E.

HAMPSHIRE COURT

Office • 1,479 sqft



- Kitchen
- New Build-Out
- Inducements Available
- Improvements Negotiable
- Five Offices and Reception

- Furnished if required
- Surface Parking Available
- 2nd Floor with exposure to 12th Street NE
- Close proximity to City Centre & Airport



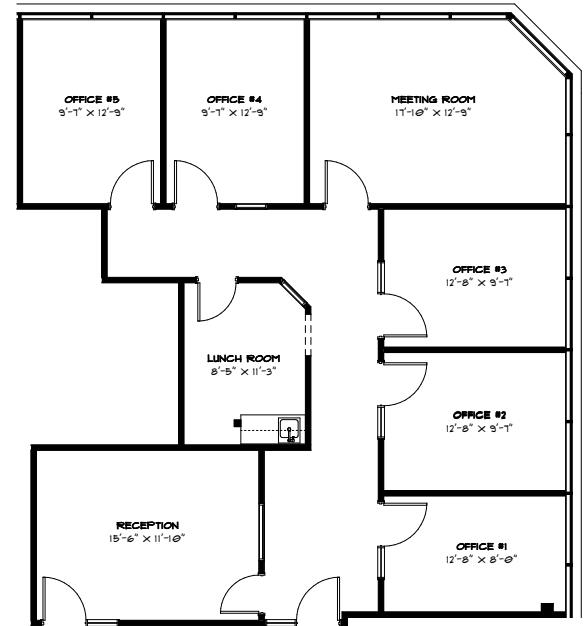
Kevin Deeks
Mobile: 403.819.8331
Fax: 403.291.3591
Email: kdeeks@norcalgroup.com

Todd Nielsen
Mobile: 403.540.8282
Fax: 403.291.3591
Email: todd@norcalgroup.com

Property Highlights:

#280, 3015 12 Street N.E.

ZONING:	I-B
BUILDING SIZE:	24,985 sqft
OFFICE:	1,479 sqft
PARKING:	Surface
MECHANICAL:	Roof Top Units in Offices (2)
LEASE RATE:	\$12.00 per sqft
OPERATING COSTS:	\$8.60 per sqft
PROPERTY TAXES:	\$1.69 per sqft



Kevin Deeks
Mobile: 403.819.8331
Fax: 403.291.3591
Email: kdeeks@norcalgroup.com

Todd Nielsen
Mobile: 403.540.8282
Fax: 403.291.3591
Email: todd@norcalgroup.com